

19" Double Section Wall Mounted Racks



Features

- Lockable tempered glass front door
- 150mm lockable rear swing section
- Sturdy welded internal frame structure
- Pre-fitted fixed metal shelves included
- Removable side panels
- Cable knockouts on rear swing frame
- Multiple earthing points with leads fitted
- Spare cage nuts included

Standards

Complies with ANSI/EIA RS-310-D,
DIN41497 part 1, IEC297-2, DIN41494 part 7

Loading capacity

40KG

Degree of protection

20

Surface finish

Powder coated

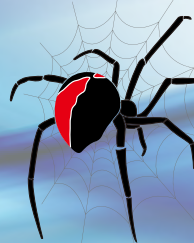
Specifications

Model	Capacity	Width(mm)	Depth(mm)	Height (mm)	Weight (kg)	Shelves (pcs)	Cage Nuts (sets)
ZH.6606W	6RU	600	600	370	20.1	1	10
ZH.6609W	9RU			500	24.6	1	10
ZH.6612W	12RU			637	28.7	2	10
ZH.6618W	18RU			903	36.2	2	20

Specifications are subject to change without prior notice.



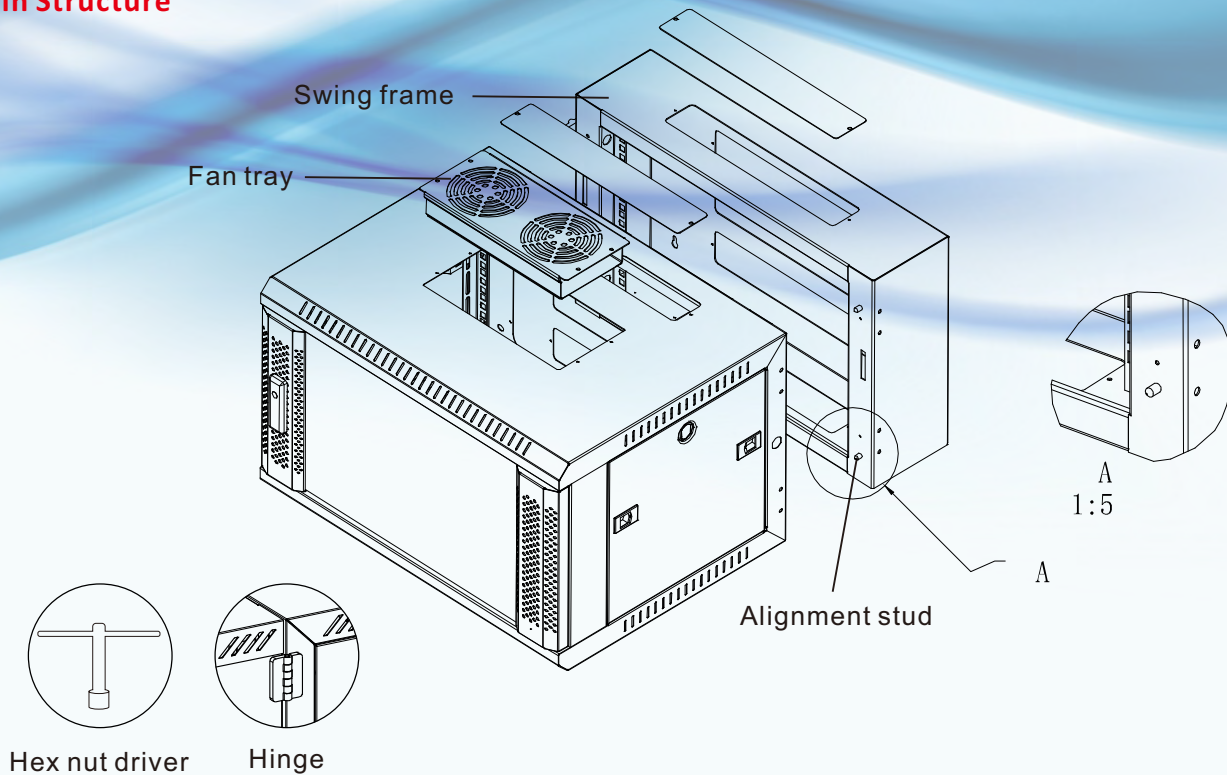
Power Systems Solutions



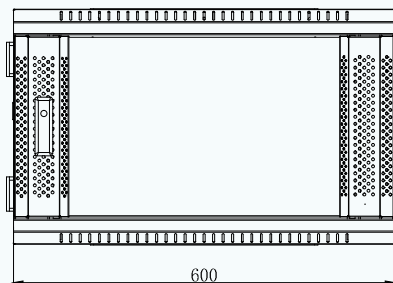
**REDBACK
RACKS**

19" Double Section Wall Mounted Racks

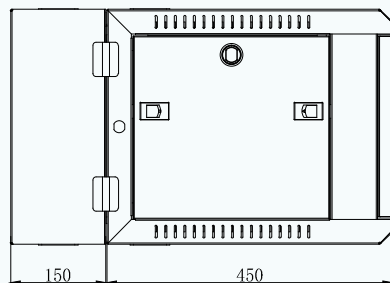
Main Structure



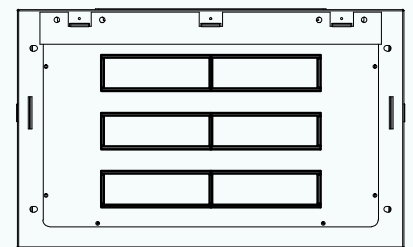
Cabinet Dimensions



Front



Side



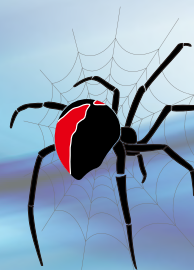
Rear

Contents Included

- 1 x wall mount cabinet
- 1 x swing frame
- 1 x key lock
- 5 x rubber cushions
- 1 x earth cable
- 2/3 (6-12RU/18RU) hinges and hex nuts
- 1 x hex nut driver
- 2 x alignment studs



Power Systems Solutions



REDBACK
RACKS